



First English Lutheran Preschool

December 2025 Newsletter

Upcoming Events

Food Pantry donations:
Canned tuna, tuna helper or laundry detergent

Dec. 4th and 5th: Angela Fraley visits (Conscious Discipline coaching)

Dec. 14th: Preschool Sunday singing with children's sermon 9am

Dec. 15th and 18th:
Chapel time with Pastor Patrick

Dec. 17th: School day at regular start time **BUT Christmas program starts at 11:30.**

Dec. 18th: School day at regular start time **BUT Christmas program starts at 11:30am**

Dec. 19th-Jan. 2nd:
No School-Christmas Break

Dec. 30th: Family reports will be sent

Jan. 5th and 6th: PAJAMA DAYS to return to school



From the Director's desk:

The days will go by quickly as we are now into the holiday season. This month of December will be a short but a busy one as classes prepare gifts for their families and make tree ornaments. We also will pack in time to learn and practice some special Christmas songs as we prepare for our Sunday church singing and program.

The teachers will be finalizing their observations as they gather all the evidence of your child's development then we will publish the family report near the end of the month. We hope you are enjoying the photos and documentation sent weekly! Merry Christmas and we wish you all the best in 2026!

Mrs. Tracy Gleissner
School 547-255-4234





Christmas Program



We are excited to celebrate the Christmas holiday with our families by hosting a program in church after our school days on Wed. Dec. 17 and Thurs. Dec. 18 for all classes. Singing will begin at 11:30 each day. This should make it less time consuming for families with siblings and we invite families to stay for fellowship afterwards as well. Other family members are invited to attend and after the singing program, the preschoolers will be released to their parent for the remainder of the time. We would like to offer refreshments after our singing and if families would like to bring something to share, please use the link to let us know:

<https://www.signupgenius.com/go/4090C4FA9A829A3FC1-60798449-christmas>



Welcome this month to ANGELA FRALEY! Our preschool program has been participating in a two year commitment to implement Conscious Discipline into each classroom focusing on teacher/child “mindset” and vocabulary. This has been an on-going process to learn the techniques and skills which help children in their social-emotional development. To continue supporting our staff we have been granted a coaching session with one of the CD trainers. “Mrs. Fraley/Miss Angela” will be in our program Thursday, Dec. 4 and Friday Dec. 5th for our morning sessions. We look forward to sharing some tips/techniques with our families to help children in their home environment that are consistent with their school one.



Auction/Spaghetti Dinner/Talent Show: We are beginning to think about our big fundraiser coming in March; we need your help to address donation letters and pick up donations if businesses request this. If you have a few hours this month and can help with this writing project please use the sign up genius to let us know. It is important to get our letters out early when requesting auction items! We might also ask for you to check in with the businesses after a few weeks to secure a more definite donation.



Family Report: This month we will finish up our documentation of your child’s observation record which provides evidence of their development in honor of the High Scope Philosophy assessment process. This family report will tie the observations (and photos) into the various categories in regards to Approaches to Learning, Social/Emotional Development, Physical and Health, Language/Literacy/Communication, Mathematics, Creative Arts, Science/Technology and Social Studies. It is hoped that each criteria has one or two observations documented but due to the number of days your child attended this may not always happen. We will begin the documentation all over again for January-April with another family report compiled at the end of April!



December Birthdays:

3/4 class:

Dec. 2nd **Arabella 4th**

PreK class:

Dec. 20th **Havericc 5th**

Dec. 26th **Zion 5th**



June Birthdays for ½ birthday celebrations!

2/3 's class: Dec. 13th **Bobby 2 ½**

Dec. 29th **Parker 2 ½**

3/4 's class:

Dec. 4th **Skylar 4 ½**

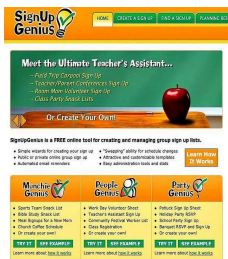
Dec. 12th **Noah 3 ½**

Dec. 14th **Everly B. 4 ½**

Pre-K class: Dec. 20th **Mrs. Smith**

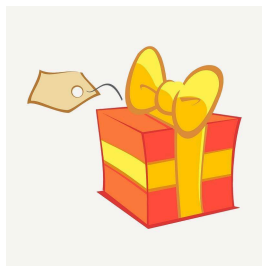
Dec. 27th **Theo 5 ½**

We look forward to celebrating our July birthdays in January
and the August births in February!



Sign up genius: We have several areas we need help in the upcoming months. Several of the activities can be done from home and occur any time in the month. We have added our classroom kleenex and paper towel donations to the list, sending in 1-2 rolls at a time helps our storage space! Also included is a request for someone to schedule a few restaurant give back nights as well as some health professionals to come share hygiene/health tips with us in January and/or February. Please take a look to see if there is an area you can support us as we go through this month and into the new year. The link:

<https://www.signupgenius.com/go/4090C4FA9A829A3FC1-60798142-ways>

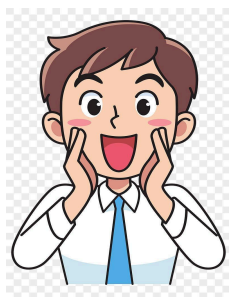


Gift giving: This year we would like to support the Broadway Christian Parish with their ministry to help feed and clothe those who are in need of extra (especially at this holiday/winter time). Some of the items requested are “snacks for on the go” like pudding cups, granola bars, fruit cups, individual bags of chips and pop tarts. They also can use cereal, canned food (with pop tops), canned tuna/cracker combos or any easy to open food products. They give out hygiene products like hand sanitizer, disinfectant wipes, toothbrushes, floss, deodorant, soap, shaving razors as well as

feminine products. Broadway Christian Church is seeking donations of new or gently used winter coats for men or women (M, L or XL sizes) as well as clothing items like flannel shirts, sweatshirts, or sweatpants. We will have a gift box you may place your donation into and then we get them delivered. Thank you for anything you can share!



Sunday Singing: We have an opportunity to share some of our Christmas program songs with the FEL church community on Sunday, Dec. 14th at their 9am service. Pastor Patrick will have a sermon/message geared towards the preschoolers then they will sing some songs. After the church service there will be refreshments as well as a Christmas ornament craft to make and take home. Use the sign up genius link to let us know if you can attend. There is NO limit to who can attend, so bring the whole family!



Did you know? We have only a few more days until our t-shirt sales with our FELP logo is due (as we want them in time for Christmas delivery.) Order forms were sent home and just need to be returned by Wed., Dec. 3rd! Our traditional children's face shirts will be available soon via Graphie-Tee's online store. Both shirt sales will be a fundraiser for our preschool. We have two classrooms desiring updated tables, so sales will go towards this project.

New baby: Our preschool family grew by one with the birth of **Vaeda's** (3/4's class) new



brother born shortly after our FALL family field trip. Congratulations to the **Bleile** family!

We also are hearing that there will be a few more babies born to our preschool families in the upcoming months!



Extended day: After careful consideration our Pre-k class will NOT be offering a weekly extended day the remainder of the school year. We have had limited interest in the last few years and teachers are currently using their afternoons to attend staff or training meetings, lesson plans and set up for the next school days. We do hope to offer a few stay/play opportunities to extend the day and give the opportunity for lunch experiences once the weather warms (as we could utilize the outdoor environment for picnics.)

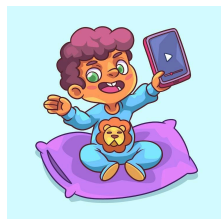


Avoid Hard plastic Sippy cups: As children's facial muscles/tongues develop the constant use of a hard plastic sippy spout limits their swallow pattern. The tongue needs to learn to elevate in order for proper speech/language to develop. Over use of a sippy cup or even a pacifier limits this ability. Try instead to offer cups with pop up straw styles or even valved

toppers.

For more information,

<https://leader.pubs.asha.org/doi/10.1044/sippy-cups-3-reasons-to-skip-them-and-what-to-offer-instead/full/>



Technology/screen time: As our break from preschool will be coming in a few weeks, we want to caution you from using screens (tv, phones, video games, etc) as an option for your preschool. Frequent use of "screens" can limit a child's perception, attention span, learning, memory, language and brain development. Children NEED time unstructured to CREATE and IMAGINE! Ideas to try instead of screen options:

- Read and story tell together (make puppets for familiar stories),

- Offer supplies like open ended art/natural items

- Create a tent inside or outside

- Bake/Cook together

- Build something

- Explore the outdoors

- Exercise or have a dance party

- Begin a family project

- Visit a new playground, park, or library

Things to do in our area....

Nov. 29-end of winter: Holiday ice skating at Howard Park (pay online for skate rental and time on the ice)

Dec. 2: Inn at St. Mary's Christmas tree lighting

Dec.4: Evening Storytime downtown SJCPL from 5-5:30pm

Dec. 5: First Friday in Downtown SB, 5pm

Dec. 5: Walk in Christmas Tree craft (all Mishawaka Library locations) 3-5:30pm

Dec. 6: Sounds of the Season (2-4pm) music and stories at Francis Branch SCJPL

Dec. 6-8: Gift of Lights (Potawatomi Zoo) every weekend evening 5-8pm,
Admission prices vary

Dec. 6: Winterfest 5-8 pm Location: Ironworks Plaza downtown Mish.

Dec. 6-7: (12-14th and 19-21st) Dasher Holiday drive through 4H fair (6-9pm) FREE

Dec. 12: Children's Concert Series (4-4:45pm) Main SJCPL

Dec. 12: DTSB Holiday Light Parade FREE 7-8pm

Dec. 13: Lakeville Branch SJCPL Holiday Open House 10am-1pm

Dec. 16: Sensory Time 5-6pm (Centre Township SJCPL)

Dec. 16: Harris Branch (MPHPL) Winter Wonderfest 4:30-7pm

Dec. 17: Game Night Tutt branch SJCPL from 3-5pm

Dec.22: Deck the Halls Walk in Craft (all MPHPL locations all day)

Dec. 27: Countdown to Noon (SJCPL main) 11:30am-12:30pm

Dec. 30: Happy Noon Year activity (Mishawaka Downtown Library)
11:30am-12:30pm

Jan. 2: Kickoff party for Winter Reading Challenge 10am-noon,
*pick up reading sheet 12/15, (downtown branch MPHPL)

